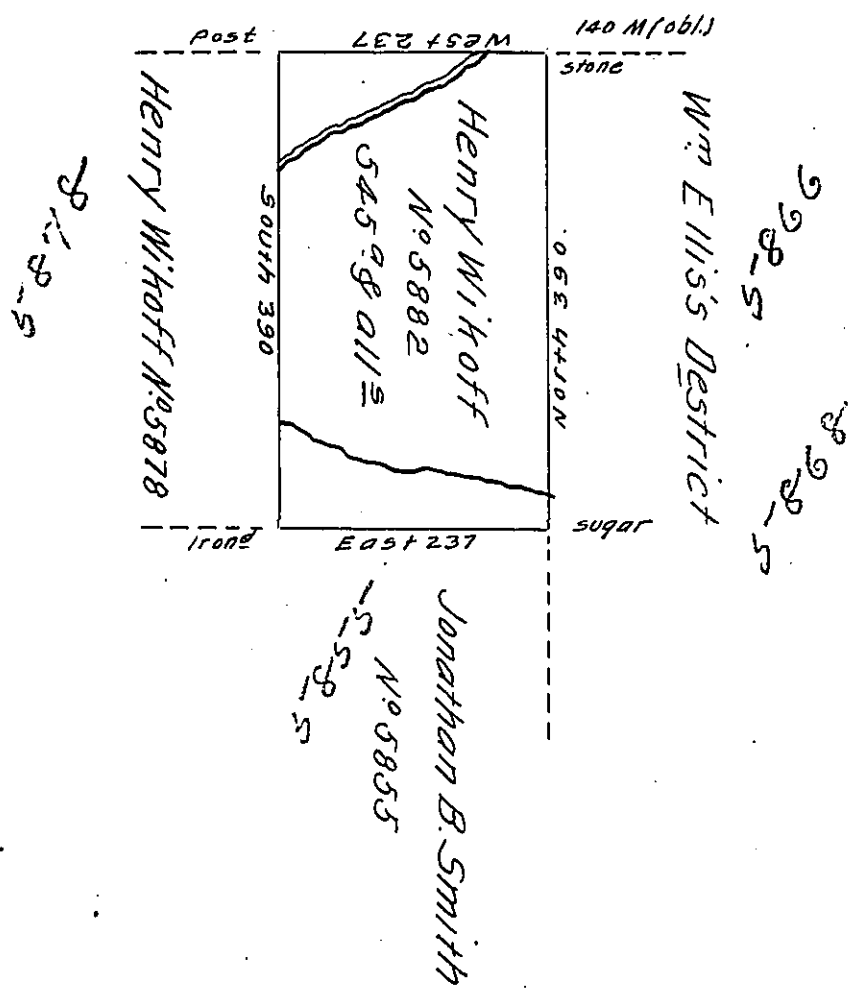


New York State Line



Surveyed to Henry Wikhoff on the 25th day (obl.) 1805 the above described tract of Land containing five hundred and forty five Acres and the Allowance of Six & Cent $\frac{1}{2}$ Situate in the Late Purchase adjoining the New York State line and the Eastern Boundary of my District in Potter County. By Warrant of 6th September 1804 Numbered 5882.

To Sam^l Cochran Esq^r S.G. James Johnston D.S.

IN TESTIMONY that the above is a copy of the original remaining on file in the Department of Internal Affairs of Pennsylvania, made conformably to an Act of Assembly approved the 16th day of February, 1833, I have hereunto set my Hand and caused the Seal of said Department to be affixed at Harrisburg, this thirty first day of January 1911.

Henry Howell
Secretary of Internal Affairs.